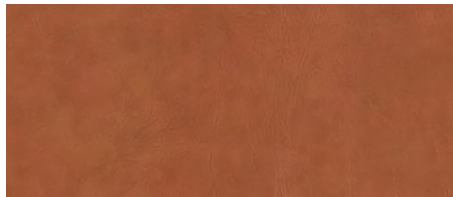
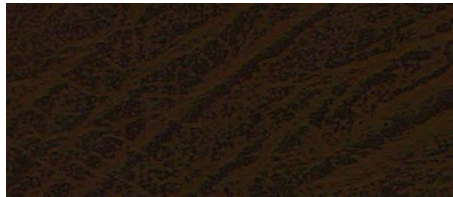
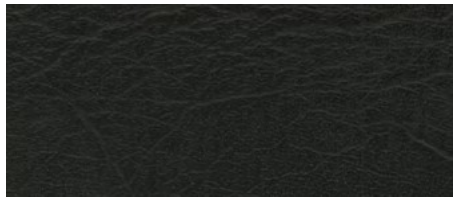
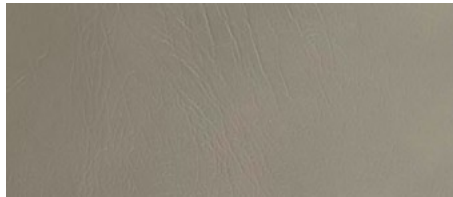
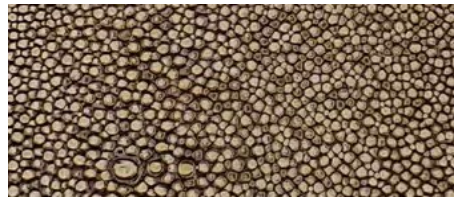
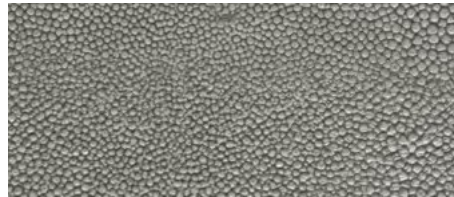
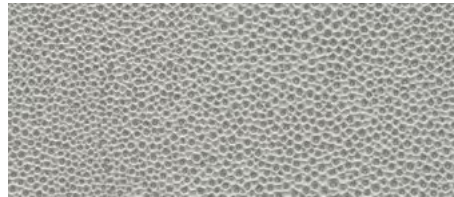


RLV COLOR/TEXTURE PALETTE - STANDARD OFFERING

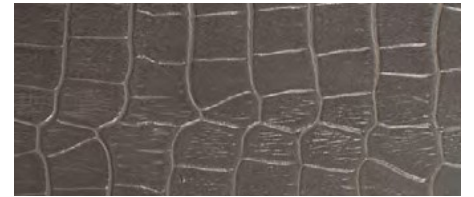
BUFFALO COLORS



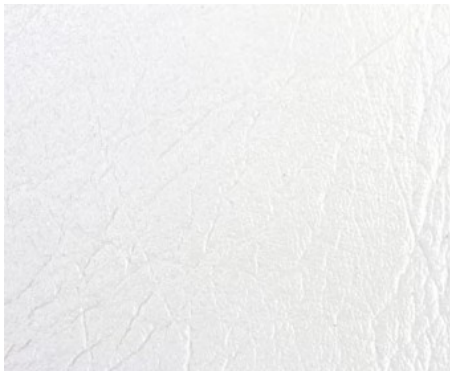
SHAGREEN COLORS



CROCODILE COLORS



BUFFALO - STANDARD RLV COLORS



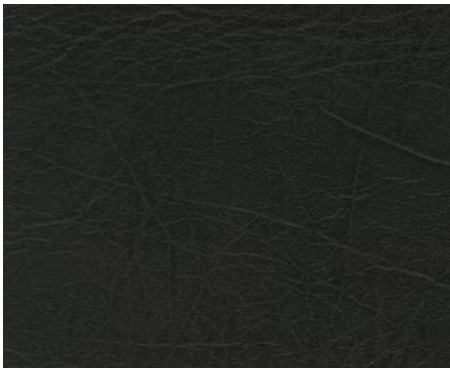
Bright White



Gold Grey Metallic



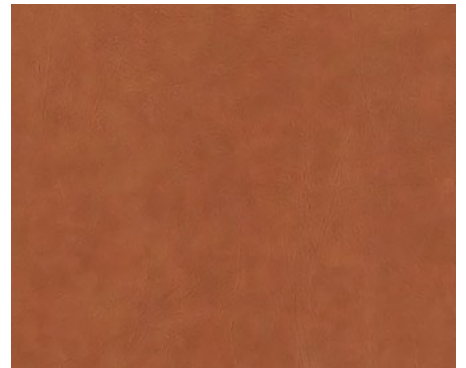
Paloma Grey



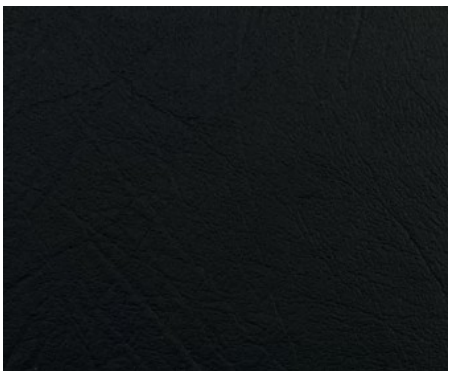
Grey Umber



Cocoa



Maple



Coal

RLV PATTERNS (OVERVIEW)

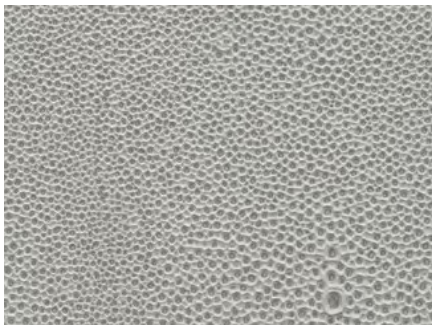
Our Component Program includes three standard RLV patterns:



BUFFALO

The Buffalo pattern represents our most popular and most familiar leather pattern, thanks to its use in the furniture industry. Aesthetically, this pattern is variable and non-repeating, with embedded details that replicate hair grains and fat wrinkles. Its 70% leather content gives it the feel of natural leather.

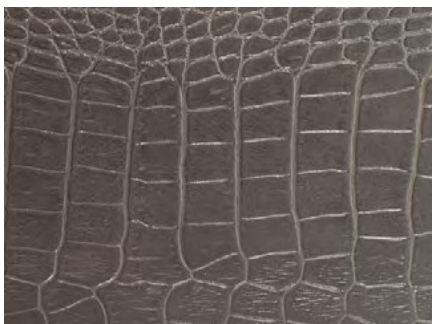
Buffalo shown in Gold Grey Metallic



SHAGREEN

The Shagreen pattern is known for its smooth, pebbly texture and small scale. Like Buffalo, this pattern is non-repeating and variable. Shagreen is typically associated with luxury, as its natural counterpart was taken from a very small sections of stingray that required a particular skill necessary to prepare and ultimately inlay them.

Shagreen shown in Grey Stone



CROCODILE

Unlike Buffalo and Shagreen patterns, Crocodile has a larger, more pronounced pattern, which we sequence match for each order. As with exotic woods, like wenge or zebrawood, by sequence matching we can produce a more aesthetically pleasing result. For this pattern, we require plan and elevation drawings to use as reference during production. See following page for examples.

Crocodile shown in Antique Grey

Each RLV Pattern includes seven standard colors as indicated on the following pages.