

Kessick - The Elevation of wine storage. Each of our exclusive Elevation lines has its own personality and evokes a unique feeling.

Elevation is a uniquely contemporary presentation of wine – A Kessick Original. Metal rods support acrylic wine cradles, creating a floating effect. Combine Elevation, custom casework and LED display lighting to create a stunning presentation of wine.

Elevation can be installed in several formats including floor-to-ceiling (with or without an installation bracket), floor-to-wall, base and soffit, and into casework. Whatever method works best for your project!

Elevation Acrylic

Elevation Acrylic diffuses LED lighting through the wine cradles, creating a stunning wine display.

Elevation Alloy

Elevation Alloy is an all metal modern and minimalist wine storage and display format.

About Kessick

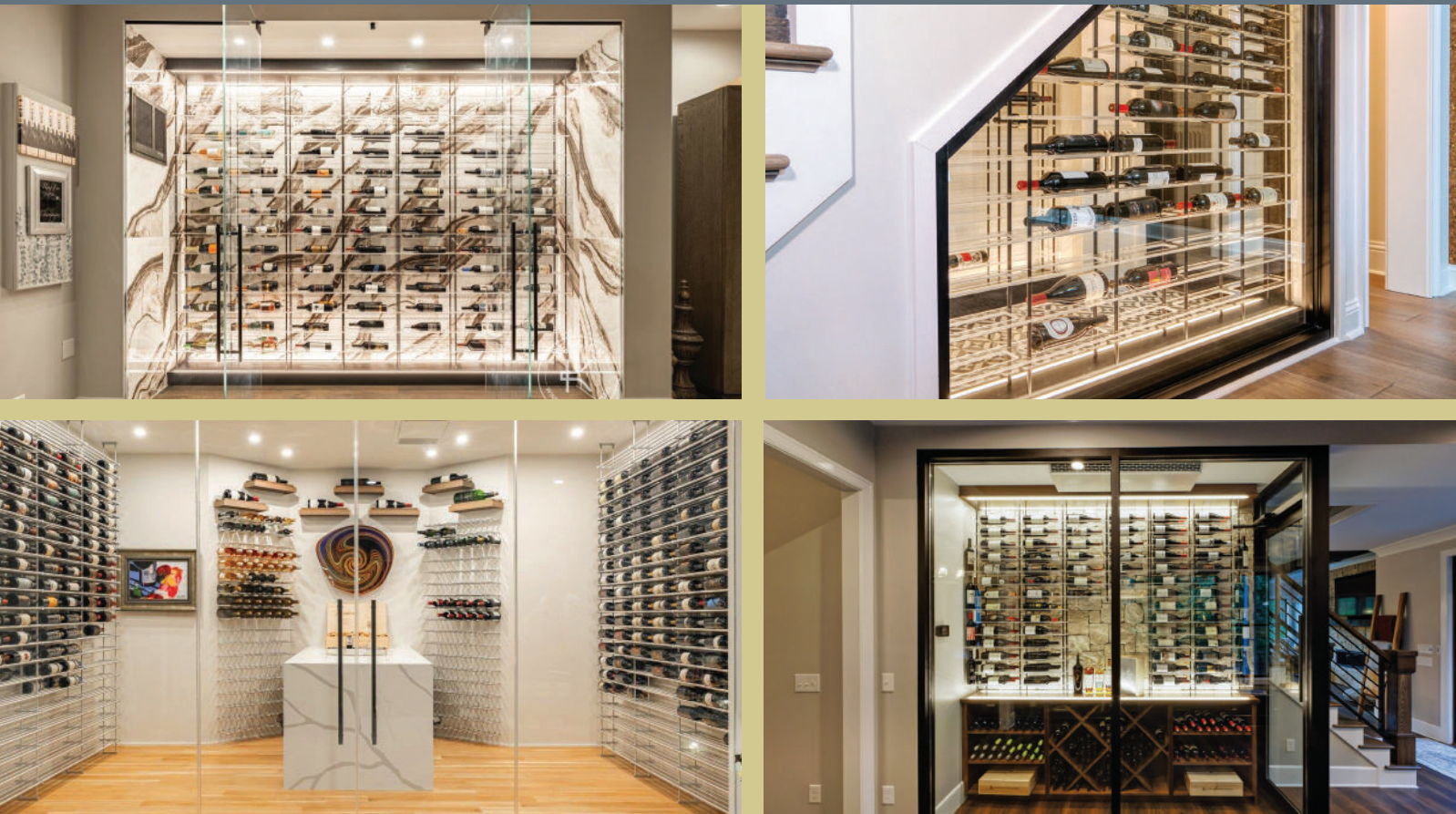
Kessick Wine Storage Systems designs and manufactures exceptional quality wine cabinetry and wine storage. Kessick is a national wholesale supplier to the professional wine cellar industry, design community and the building trades.

From consultation to comprehensive 3D designs to fully assembled wine storage components, Kessick Quality is evident in every step of the process.

Our objective is to combine aesthetics, function, and sound building science to create the perfect wine storage environment.

Kessick designs and manufactures a wide variety of wine cabinetry and contemporary wine storage. These include Estate Series, Reserve, Parallel, Wine As Art, and Somm. Please go to our website to learn more.

ELEVATION
BY KESSICK



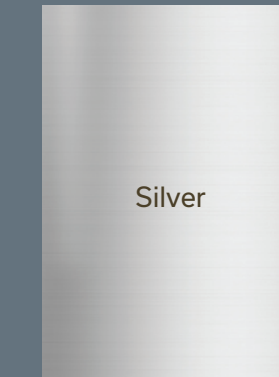
office@kessick.com | 864.297.1911 | kessick.com





Hardware Finishes

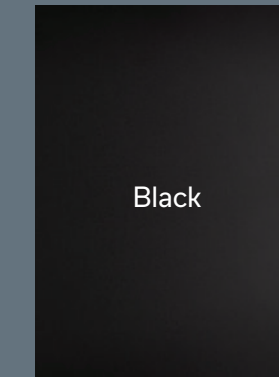
Available in Three Finishes



Silver



Gold



Black

Other Materials

Brillante' Collection

Brillante' architectural panels are high gloss lacquer finished .75" European cabinet substrates. They are ideal for casework and wall panels for Kessick contemporary wine storage systems such as Elevation, Parallel and Wine As Art.

[View collection finishes on our website](#)

Nature+

Nature+ architectural panels replicate both the look and feel of natural wood grain. The rich textures and organic shapes are perfect for transitional and contemporary wine room casework and wall panels.

[View collection finishes on our website](#)

Zenit

The Zenit Collection is an architectural panel with a super-matte polyester lacquer finish. This popular matte panel has a unique suede finish. The .75" panels are used for transitional and contemporary wine room casework and wall panels.

[View collection finishes on our website](#)

Wood Finishes

Kessick offers the finest quality woods - White Oak, Walnut, and Sapele Mahogany in five finish options - Unfinished, Clear Lacquer, Walnut, Espresso and Gray stains

[View collection finishes on our website](#)